

Parts List

Ref	IPN	Description
CLEAR ROH	008-00010-25	(S) LED 2MM GREEN TOWER 3.8MM BASE
CALLBK	008-00010-25	(S) LED 2MM GREEN TOWER 3.8MM BASE RO
C510	015-24150-08	CAP CER 0805 CHIP 1N5 10% X7R 50V
C511	015-25150-08	CAP CER 0805 CHIP 15N 10% X7R 50V
C512	015-24100-08	CAP CER 0805 CHIP 1N 10% X7R 50V
C513	015-24100-08	CAP CER 0805 CHIP 1N 10% X7R 50V
C516	015-24470-08	CAP CER 0805 CHIP 4N7 10% X7R 50V
C517	015-24330-08	CAP CER 0805 CHIP 3N3 10% X7R 50V
C518	015-25100-08	CAP CER 0805 CHIP 10N 10% X7R 50V
C519	015-24100-08	CAP CER 0805 CHIP 1N 10% X7R 50V
C520	015-25220-08	CAP CER 0805 CHIP 22N 10% X7R 50V
C531	015-23150-01	CAP CER 0805 CHIP 150P 5% NPO 50V
C542	015-06100-08	CAP CER 1206 CHIP 100N 10% X7R 50V
C570	015-06100-08	CAP CER 1206 CHIP 100N 10% X7R 50V
C571	015-06100-08	CAP CER 1206 CHIP 100N 10% X7R 50V
C580	015-06100-08	CAP CER 1206 CHIP 100N 10% X7R 50V
DVC SL	008-00010-21	(S) LED 2MM RED TOWER 3.8MM BASE ROHM
DSP ROHM	008-00010-25	(S) LED 2MM GREEN TOWER 3.8MM BASE
D502 IN	001-10000-99	(S) DIODE SMD BAV99 DUAL SWTCH SNGL
D520	008-00010-15	(S) LED 3MM GREEN HLMP1585 DIFSD 2V3 6.
D521	008-00010-15	(S) LED 3MM GREEN HLMP1585 DIFSD 2V3 6.
D522	008-00010-15	(S) LED 3MM GREEN HLMP1585 DIFSD 2V3 6.
D523 IN	001-10000-99	(S) DIODE SMD BAV99 DUAL SWTCH SNGL
D524 IN	001-10000-99	(S) DIODE SMD BAV99 DUAL SWTCH SNGL
FUNCTI	008-00010-25	(S) LED 2MM GREEN TOWER 3.8MM BASE RO
GO ROHM	008-00010-25	(S) LED 2MM GREEN TOWER 3.8MM BASE
HUNDS	008-00020-29	(S) LED DISPLAY GREEN 7 SEG SINGLE HDS
IC507	002-10140-21	(S) IC MC14021BDR2 8BIT SHIFT REGSTR.S
IC508	002-10144-99	(S) IC SMD 4*7 SEGMENT LED DRIVER
IC514	002-74905-95	(S) IC SMD 74HC595 SHIFT REGISTER
IC515	002-74900-04	(S) IC SMD 74HC04D HEX INVERTER BUFFD
IC517	002-74907-40	(S) IC 74HC74 DUAL D-TYPE FLIP FLOP SO
P8A	240-00026-23	CONN PADLE BD 8 WAY MICRO MATCH 0-
215570 P11	240-00020-87	HEADER 2X5 WAY RGT ANGLE PCB MTG
MOLEX 9 PT501	040-05100-20	SWITCH ROT 10K LOG POT 3A 16VDC SPST P
Q506	000-10008-48	(S) XSTR SMD BCW60/BC848B215 NPN SOT23
Q512	000-10008-48	(S) XSTR SMD BCW60/BC848B215 NPN SOT23
Q513	000-10008-48	(S) XSTR SMD BCW60/BC848B215 NPN SOT23
Q514	000-10008-48	(S) XSTR SMD BCW60/BC848B215 NPN SOT23
Q515	000-10008-48	(S) XSTR SMD BCW60/BC848B215 NPN SOT23
Q516	000-10008-48	(S) XSTR SMD BCW60/BC848B215 NPN SOT23
Q550	000-10008-48	(S) XSTR SMD BCW60/BC848B215 NPN SOT23
R517	036-10000-00	RES M/F 0805 CHIP ZERO OHM
R544	036-15470-00	RES M/F 0805 CHIP 47K 5%
R545	036-15470-00	RES M/F 0805 CHIP 47K 5%
R552	036-13270-00	RES M/F 0805 CHIP 270E 5%
R553	036-13270-00	RES M/F 0805 CHIP 270E 5%
R554	036-13270-00	RES M/F 0805 CHIP 270E 5%
R555	036-13270-00	RES M/F 0805 CHIP 270E 5%
R556	036-15470-00	RES M/F 0805 CHIP 47K 5%
R557	036-15470-00	RES M/F 0805 CHIP 47K 5%
R558	036-15470-00	RES M/F 0805 CHIP 47K 5%
R559	036-15470-00	RES M/F 0805 CHIP 47K 5%
R560	036-15470-00	RES M/F 0805 CHIP 47K 5%
R561	036-15470-00	RES M/F 0805 CHIP 47K 5%
R562	036-15470-00	RES M/F 0805 CHIP 47K 5%
R563	036-15470-00	RES M/F 0805 CHIP 47K 5%
R564	036-13470-00	RES M/F 0805 CHIP 470E 5%
R565	036-13470-00	RES M/F 0805 CHIP 470E 5%
R566	036-13470-00	RES M/F 0805 CHIP 470E 5%
R567	036-13270-00	RES M/F 0805 CHIP 270E 5%
R573	036-14100-00	RES M/F 0805 CHIP 1K 5%
R574	036-13270-00	RES M/F 0805 CHIP 270E 5%
R575	036-13270-00	RES M/F 0805 CHIP 270E 5%
R587	036-12100-00	RES M/F 0805 CHIP 10E 5%
R588	036-14220-00	RES M/F 0805 CHIP 2K2 5%
R589	036-14470-00	RES M/F 0805 CHIP 4K7 5%

Parts List

Ref	IPN	Description
R590	036-14220-00	RES M/F 0805 CHIP 2K2 5%
R591	036-13150-00	RES M/F 0805 CHIP 150E 5%
R594	036-12100-00	RES M/F 0805 CHIP 10E 5%
R597	036-13270-00	RES M/F 0805 CHIP 270E 5%
R635	036-15100-00	RES M/F 0805 CHIP 10K 5%
R636	036-13560-00	RES M/F 0805 CHIP 560E 5%
R637	036-13560-00	RES M/F 0805 CHIP 560E 5%
R638	036-13560-00	RES M/F 0805 CHIP 560E 5%
R639	036-13560-00	RES M/F 0805 CHIP 560E 5%
R643	036-15470-00	RES M/F 0805 CHIP 47K 5%
S8B	240-04020-50	SKT 8WAY 2ROW(2X4) PCB MTG MICROMATCH
S10	240-04021-61	SKT TELEPHONE JACK 6-WAY SIDE ENTY 55516
TX	008-00010-21	(S) LED 2MM RED TOWER 3.8MM BASE ROHM SC
TENS	008-00020-29	(S) LED DISPLAY GREEN 7 SEG SINGLE HDSP
UNITS	008-00020-29	(S) LED DISPLAY GREEN 7 SEG SINGLE HDS
WAIT	008-00010-23	(S) LED 2MM YELLOW TOWER 3.8MM BASE ROH

Mechanical Parts and Miscellaneous Parts

IPN	Description
220-01322-03	PCB T2033/35 DISPLAY BRD
240-00020-54	PLUG 16 WAY 2X8 FLAT CABLE TERMN MICROMATCH
240-00020-56	PLUG 8WAY 2ROW(2X4) CORD MTG IDC MICROMATCH
240-04020-72	SKT HOUSING 2 WAY CORD MTG ULTREX
240-04020-99	SKT RECEPTACLE SML WIRE CRIMP FOR ULTREX HOU
250-00010-19	SPKR A3M2520 C/W RUBBER SEALING RING
301-00001-05	ADAPTOR FRT PNL T2000 SII
304-07035-00	LIGHT SPREADER A2M2531 BUTTONS T2000 FM1/TR1
311-01042-01	KNOB A3M2530 T2000 S11
311-03080-01	KEYPAD T2035 SII INTERNATIONAL
312-01057-01	LENS T2035 SII GREEN DISPLAY
316-06496-01	PNL FRT SCRIN T2035 SII
349-00010-22	SCREW NO 4X3/8 PAN POZI PLASTITE
349-00010-24	SCREW #4X5/8 PLASTITE PAN POZI
356-00010-01	TAG SOLDER 3MM SHORT M6132/3.2
357-00010-03	FIX PUSH ON SFO 2938
365-00100-20	LABEL WHITE S/A 28X11MM QUIKSTIK RW718/4
400-00020-07	SLEEVING 2MM SIL RUBBER
429-20000-05	T2000 SERIES II INSTALLATION GUIDE
459-20300-02	T2030/T2035 SERIES II USERS GUIDE
T2035 VARIANT PARTS	
201-00030-10	WIRE #1 T/C WIRE 7/0.2MM PVC BLACK
205-00010-12	CABLE FLAT RBBN 16 CORE 16/7/0.1 GREY
304-07037-00	LIGHT SPREADER A4M2533 KNOB T2000 FM1/TR1
349-00020-30	SCREW TAPTITE M3X6MM PAN POZI BZ
T2035 EMC VARIANT PARTS	
205-00010-16	CABLE FLAT RBBN 25 CORE 28 AWG GREY
240-00010-91	CONN MALE ON WIRE 18WAY MICROMATCH
369-00020-30	TAPE VINYLFOAM 2 SIDE S/A 24*1.5MM INSEAL 51
X2EF01	EMC FILTER PCB ASSEMBLY T2020 T2035 T2040



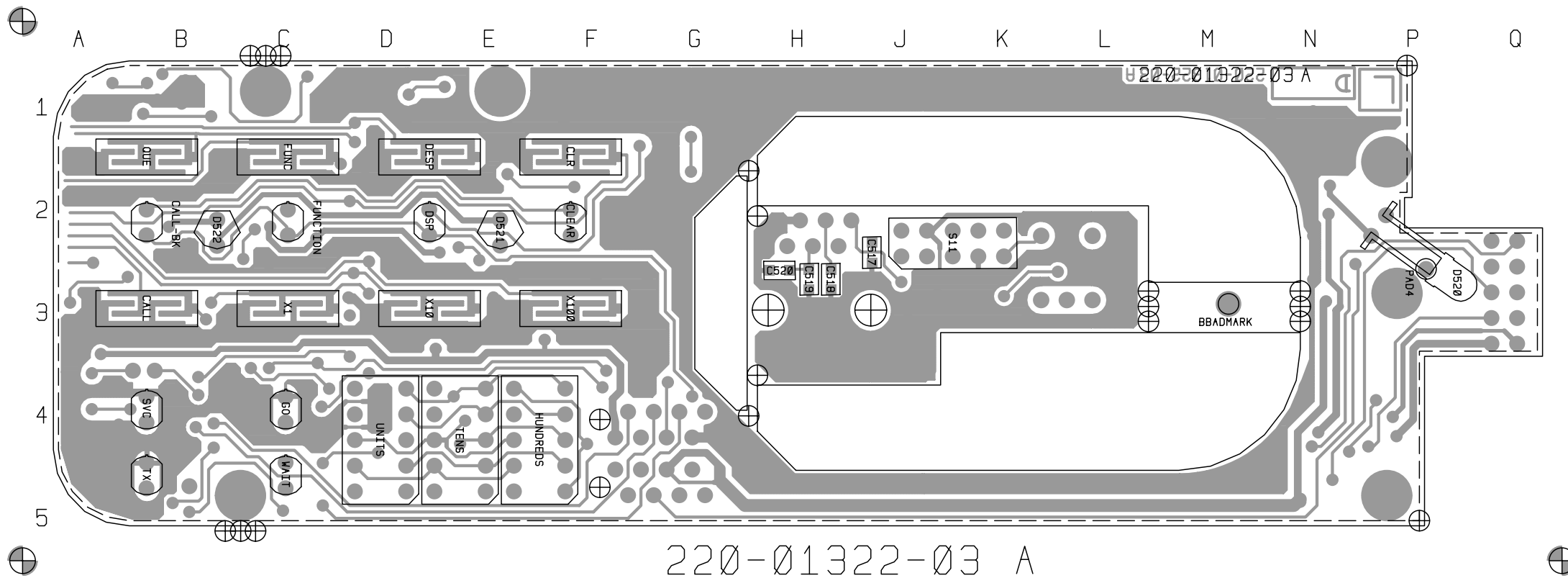
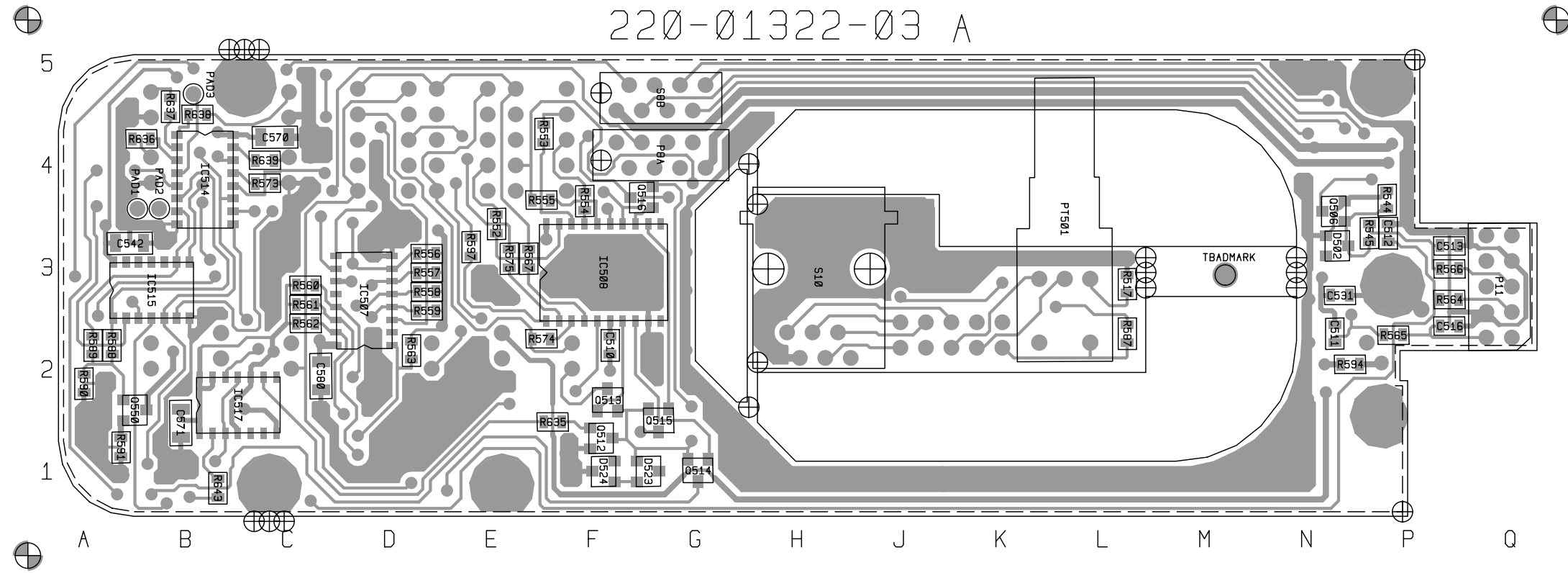
PCB Information Pack Tait T2000

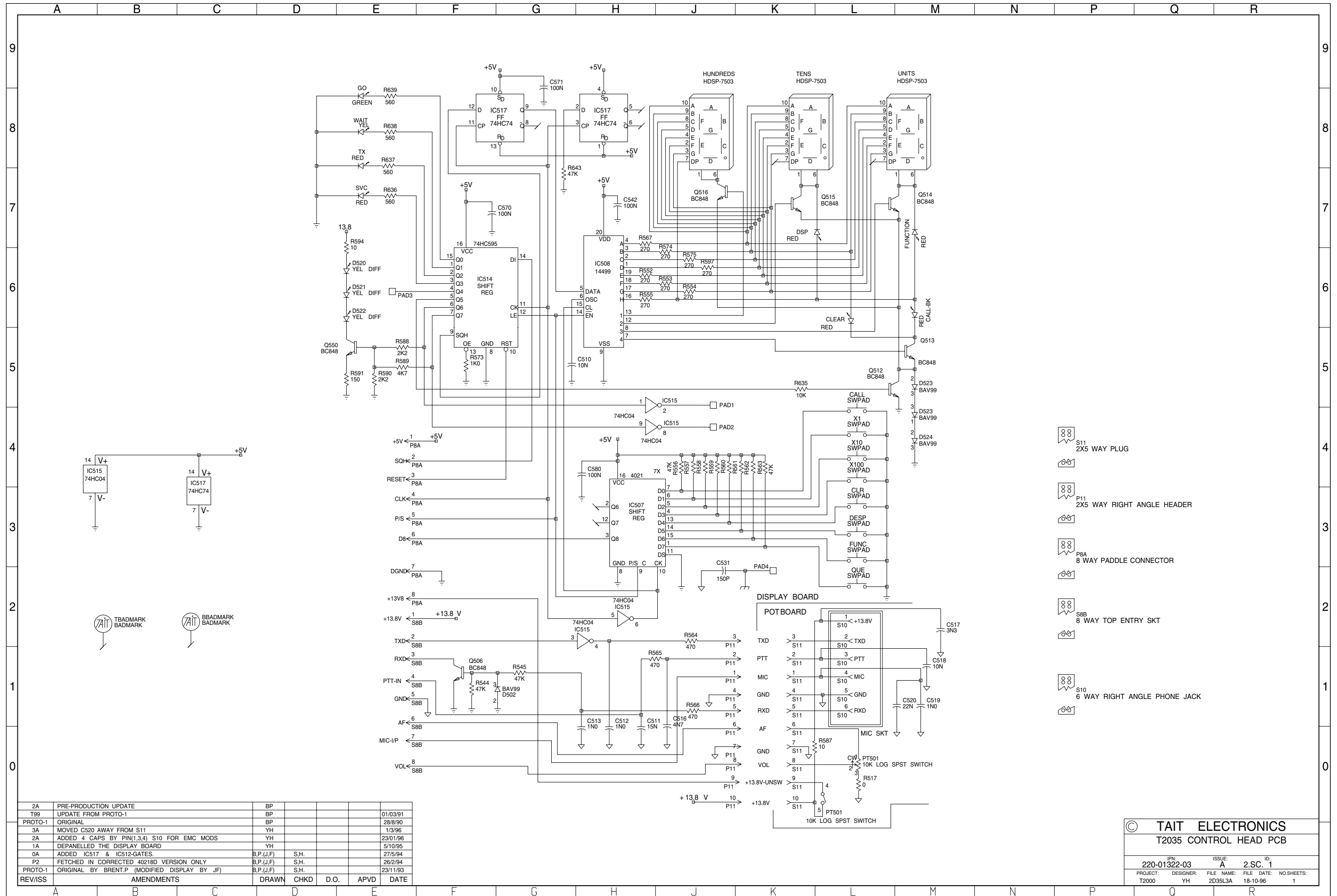
PCB Layout Control Head Parts List 220-01322-03 IPN 403-01322-03

Parts List Amendments

This document can be printed on A3 as single-sided, double-sided, unfolded or z-folded.







- S11 2X5 WAY PLUG
- P11 2X5 WAY RIGHT ANGLE HEADER
- P8A 8 WAY PADDLE CONNECTOR
- S8B 8 WAY TOP ENTRY SKT
- S10 6 WAY RIGHT ANGLE PHONE JACK

REV/ISS	AMENDMENTS	DRAWN	CHKD	D.O.	APVD	DATE
2A	PRE-PRODUCTION UPDATE	BP				
T99	UPDATE FROM PROTO-1	BP				01/03/91
PROTO-1	ORIGINAL	BP				28/8/90
3A	MOVED C520 AWAY FROM S11	YH				1/3/96
2A	ADDED 4 CAPS BY PIN(1,3,4) S10 FOR EMC MODS	YH				23/01/96
1A	DEPANELLED THE DISPLAY BOARD	YH				5/10/95
0A	ADDED IC517 & IC512-GATES.	B.P.(J.F)	S.H.			27/5/94
P2	FETCHED IN CORRECTED 40218D VERSION ONLY	B.P.(J.F)	S.H.			26/2/94
PROTO-1	ORIGINAL BY BRENT.P (MODIFIED DISPLAY BY JF)	B.P.(J.F)	S.H.			23/11/93

© TAIT ELECTRONICS
T2035 CONTROL HEAD PCB

IPN: 220-01322-03	ISSUE: A	ID: 2.S.C. 1
PROJECT: T2000	DESIGNER: YH	FILE NAME: 2D35L3A
		FILE DATE: 18-10-96
		NO SHEETS: 1